



## REFRIGERATOR 1430L, 2-DOOR -2+10 C, R290

Model: REX142FR60MH

Article no: 725236

Power supply: 230V 1Ph ~60Hz

Full door refrigerator with internal and external structure in 304 AISI stainless steel; outer back panel in galvanized steel and bottom panel in anti-corrosive material.

The cabinet has a digital control with a temperature display and setting and manual activation of defrost cycle. Fully compliant HACCP digital controls include visible alarms.

The refrigerator has an optimized back-to-front forced airflow that provides even temperature distribution and fast cooling in any condition. It is fitted with 75 mm-thick cyclopentane insulating foam.

The model has a reversible door with a lock and door micro switch to stop the fan when the door is opened. The internal structure offers numerous charging positions to host grids, ensuring higher net capacity and greater storage space.

### MAIN FEATURES

- Operating temperature from -2 to +10 °C
- Digital control with cabinet temperature display
- Setting and manual activation of defrost cycle
- For ambient temperatures up to 43°C
- Large storage area suitable to contain 2/1 GN grids
- Shelves on anti-tilt runners
- Optimised back-to-front forced airflow
- Even temperature distribution and fast cooling in
- Automatic defrost

REX142FR60MH, 725236

05-02-24 (13:05)

# TECHNICAL DATA

REX142FR60MH, 725236, 05-02-24 (13:05)

<b>Model Number Specific</b>	REX142FR60MH
<b>Voltage (V)</b>	230
<b>Phase</b>	1
<b>Frequency (Hz)</b>	60
<b>Loading (kW)</b>	0,32
<b>Fuse (A)</b>	10
<b>IP Class</b>	21
<b>Width, net (mm)</b>	1441
<b>Depth, net (mm)</b>	837
<b>Height, net (mm)</b>	2090
<b>Weight, net (kg)</b>	210
<b>Weight, gross (kg)</b>	230
<b>Volume, net (m3)</b>	2,52
<b>Volume, gross (m3)</b>	3,28
<b>Energy Class</b>	D
<b>Connection Cable, length (m)</b>	3
<b>Plug type</b>	Schuko
<b>Adapted for container sizes</b>	GN
<b>Ambient temperature, max (°C)</b>	43
<b>Automatic defrost</b>	Yes
<b>Basket sizes</b>	GN2/1
<b>Certifications</b>	CE
<b>Condensor type</b>	Air cooled
<b>Cooling capacity (W)</b>	438
<b>Cooling fan</b>	Yes
<b>Door Hanging</b>	Right
<b>Door, type</b>	Stainless steel
<b>Doors, qty (pcs)</b>	2
<b>Exterior</b>	Stainless steel
<b>Filling factor refrigerant (g)</b>	115
<b>Grids, qty (pcs)</b>	6
<b>Installation, type</b>	Floor model
<b>Locking device, included</b>	Yes
<b>Marine feet</b>	Yes

Loipart AB (HQ), Sweden  
Tel. +46 313 920 100, loipart@loipart.se

LMG Finland oy, Finland  
+358 40 664 6680, lmg@lmg.fi



Loipart USA inc, USA  
Tel. +1 954 530 5276, loipartusa@loipart.com

Loipart SEA Pte Ltd, Singapore  
Tel. +65 674 99 100, contact@loipart.sg

Visit us at [www.loipart.com](http://www.loipart.com)

<b>Noise level &lt;(dB)</b>	70
<b>Other general information</b>	Yearly and daily energy consumption: 1533kWh/year - 4kWh/24h Climate class: Heavy Duty (5) Energy Efficiency Index (EEL): 67.83
<b>Refrigerant type</b>	R290
<b>Temperature, max (°C)</b>	10
<b>Volume, refrigerator (L)</b>	1430

## INCLUDED IN DELIVERY

Supplied with 6x2/1GN Rilsan coated grids and six sets of S/S marine grid runners.

Loipart AB (HQ), **Sweden**  
Tel. +46 313 920 100, loipart@loipart.se

LMG Finland oy, **Finland**  
+358 40 664 6680, lmg@lmg.fi



Loipart USA inc, **USA**  
Tel. +1 954 530 5276, loipartusa@loipart.com

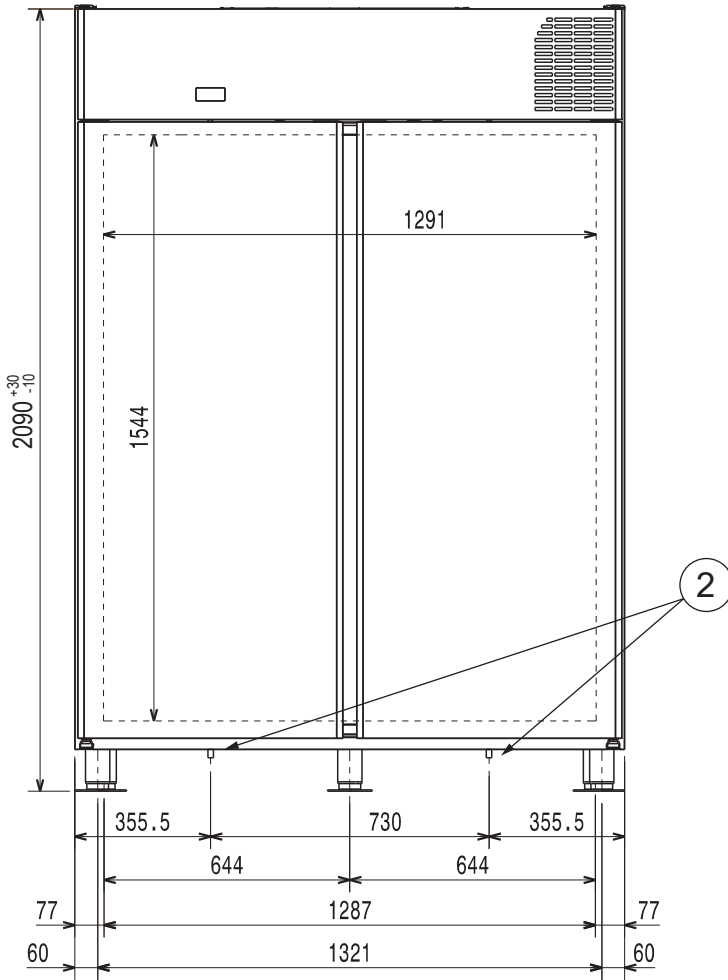
Loipart SEA Pte Ltd, **Singapore**  
Tel. +65 674 99 100, contact@loipart.sg

Visit us at [www.loipart.com](http://www.loipart.com)

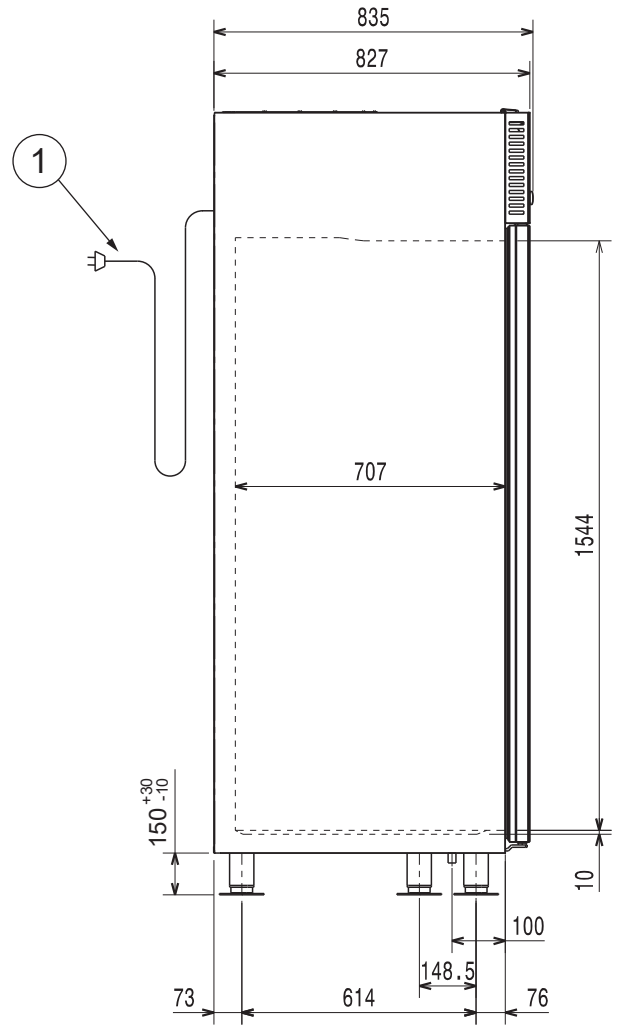
# DIMENSIONS

Model: REX142FRM Rev. 1  
 REX142FR60MH

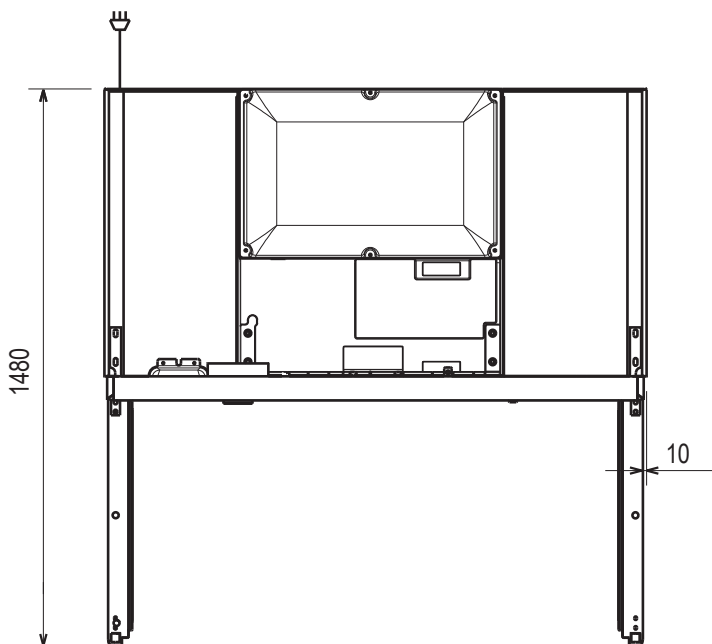
FRONT



SIDE



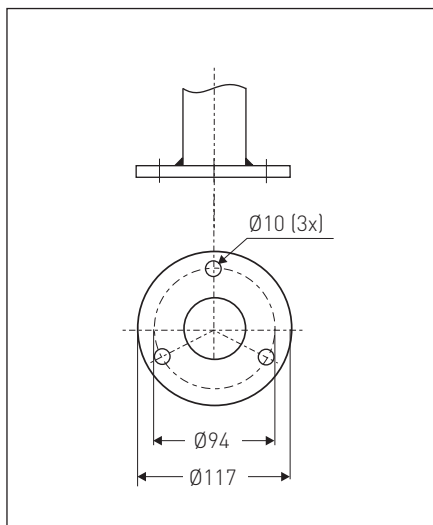
TOP



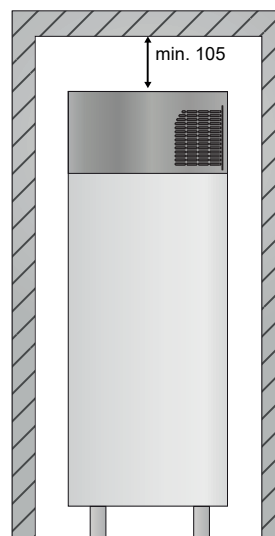
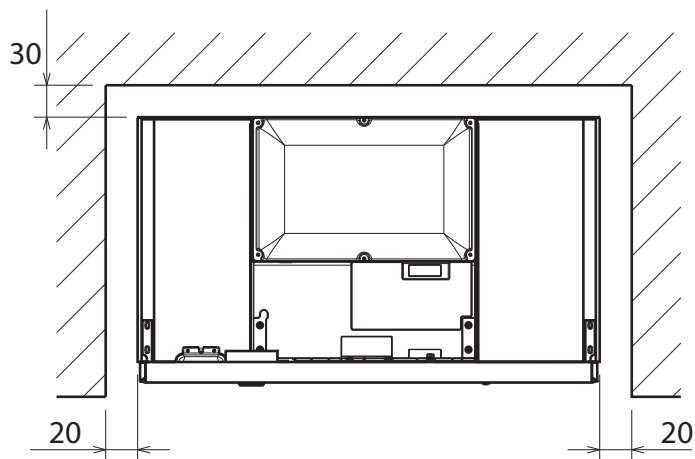
- 1. Electrical connection cable 3 m with Shuko plug
- 2. Drain hole 17,5 mm

## DIMENSIONS

### DETAIL OF MARINE FOOT



### POSITIONING



## MARINE INSTALLATION

The appliance must be levelled; otherwise its operation could be affected. Adjust the height and level by means of the levelling feet, checking that the door opens and closes properly.

NOTE! For additional instructions of installation please see separate Installation instructions.