

CHUTE SYSTEM



LOIPART

MARINE GALLEY, LAUNDRY
& WASTE AREA SOLUTIONS



CHUTE SYSTEM

YOUR PARTNER FOR SUSTAINABLE
SHIPPING!

THE CHUTE SYSTEM

The chute system is designed to be used for either waste or laundry in accordance with IMO SOLAS. It provides an efficient means of transportation of goods to collections sites on lower decks. It also minimizes the risk of cross contamination.

The chute segments are delivered in prefabricated, AISI 304, modular segments with insulation and pre-cabling for quick and easy installation. A minimum of welding work is required due to the push-fit installation.

COST-EFFICIENT TRANSPORT

- Simplifies the handling of waste or laundry for the crew.
- Minimizes the risk for cross-contamination.
- Collect and store from several decks at one place.
- Keep the waste away from passengers!



Chute door

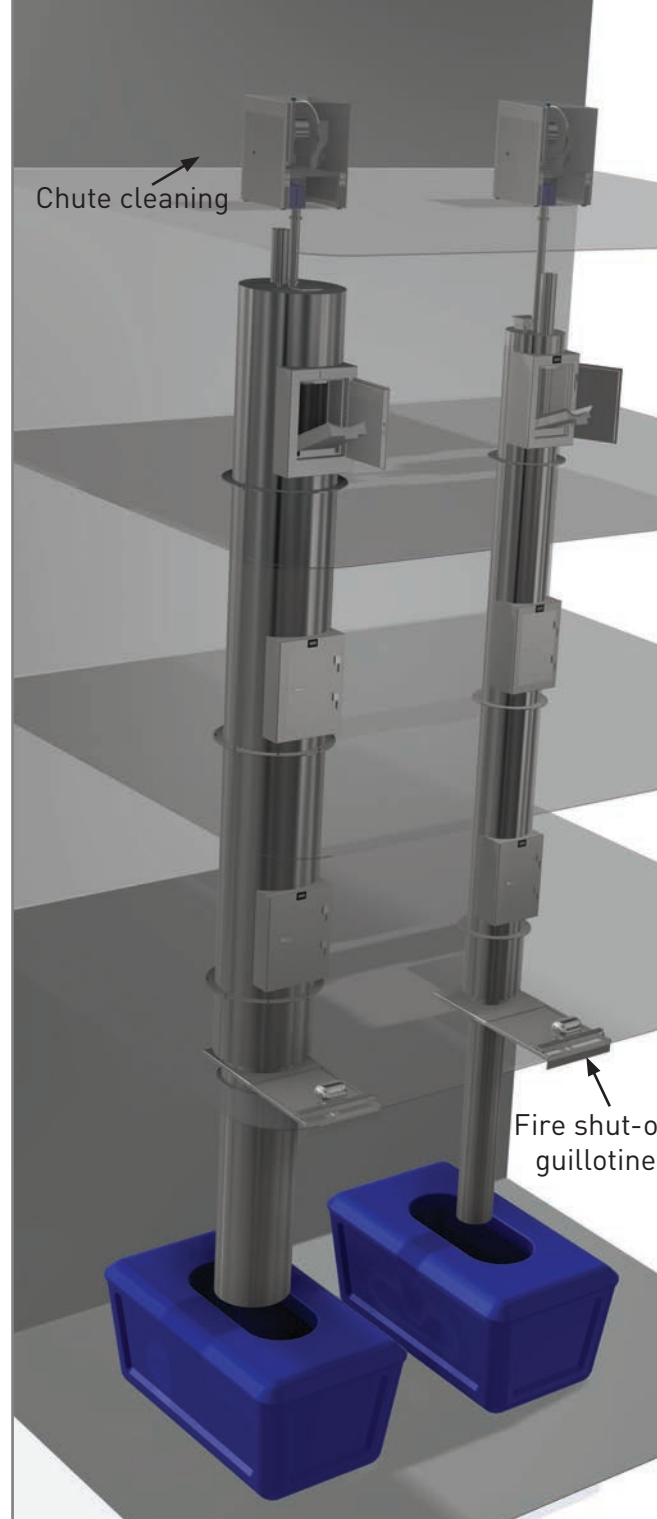


Illustration of chute with door on three decks.

KEY FEATURES

- A system built in accordance with SOLAS.
- Hygienic, reliable and user-friendly system.
- Simple and cost-efficient installation.
- Designed by engineers with years of experience in the field.
- Produced is done in our own facilities. This ensures that we can offer the highest possible quality at a reasonable price.
- Turnkey solutions with installation.

SYSTEM COMPONENTS

Each chute consists of the following components:

A. Pre-insulated and pre-cabled modular chute segments (fig. 1).

- No additional trunk or extra paneling is necessary.
- Minimum welding is required due to the push-fit solution.

B. Chute control system incl. information display next to each door (fig. 2 and 3).

C. A-60 Chute door(s) with locking system and internal feeding hopper. The door is locked during the following situations;

- Other door in chute open.
- Container not in position.
- Fire alarm.
- Chute cleaning in operation.

D. Floating deck penetration for noise reduction.

The chute flange rest on the deck and the chute parts are put together with a push-fit connection. This ensures noise reduction.

E. Ventilation fan. In order to avoid odor, the ventilation fan keeps the inside of the chute below atmospheric pressure.

F. Chute cleaning system. High pressure water pump and flexible rotating brushes will maintain the chute sanitary throughout its lifetime.

G. Fire shut-off guillotine in compliance with SOLAS (fig. 3).

H. Fire alarm and water sprinkler.

I. Container with integrated compactor, crusher, etc.

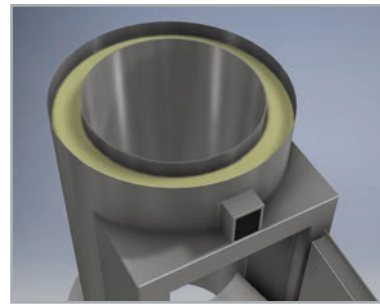


Fig. 1: Pre-insulated segment



Fig. 2: Display next to each door



Fig. 3: Main chute control system



Fig. 3: Fire shut-off guillotine

YES!

- General waste
- Glass
- Metal tins & cans
- Laundry

NO!

- Food waste
- Cardboard
- Plastic film
- Hazardous waste

Chute diameter will be adapted to type of waste or laundry.

We have for several years been working with environmental development within the maritime and offshore sector with a focus on ship-generated garbage.

In respect of the serious legal and environmental issues related to discharge at sea, we can provide cost-effective, compliant solutions and environmental expertise.

WE MAKE LIFE ON BOARD COME ALIVE!



LOIPART GROUP

Loipart AB (HQ)

Jonsered, Sweden
Phone +46 313 920 100
loipart@loipart.se

LMG Finland OY

Eura, Finland
Phone: +358 40 664 6680
lmg@lmg.fi

Loipart USA Inc.

Fort Lauderdale, USA
Phone +1 954 530 5276
Fax +1 954 530 5543
loipartUSA@loipart.com

Loipart SEA Pte Ltd

Singapore 408731
Phone: +65 674 99 100
Fax: +65 674 99 101
contact@loipart.sg

Loipart Korea Co Ltd

Haeundae-Gu, Busan 48059
Tel: +82 51 626 6363
Fax: +82 52 626 3459
contact@loipart.kr

